

NOCTUA

Mini Unmanned Aerial Systems for
Intelligence, Surveillance, Reconnaissance
(ISR) missions and tactical mapping

AEROMAPPER


MADE IN FRANCE



Flexible

PAYLOADS

NOCTUA line
is compatible with ISR,
tactical mapping cameras
and custom payloads



40 to 80 km

DATA RANGE

NOCTUA is approved for
Beyond-Line-Of-Sight
operations and is able to
cover long distances



2 to 5

HOURS

This best in-class
flight time available on
NOCTUA drones allows to
efficiently cover large areas



AES 256

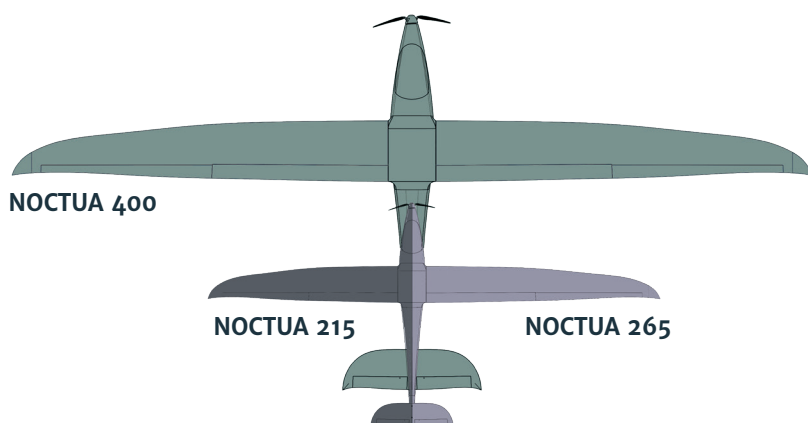
ENCRYPTION



**Less than 30 kg
cases included**

Increased connection robustness

- Multi-channel communication system (868MHz+2.4GHz)
- High-security level thanks to AES 256 data encryption +4G/LTE connectivity



NOCTUA 215

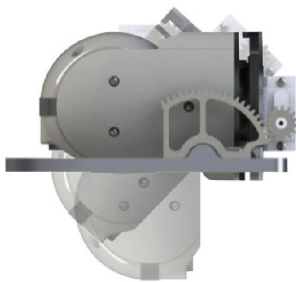
NOCTUA 265

NOCTUA 400

	NOCTUA 215	NOCTUA 265	NOCTUA 400
Endurance	2h	2h30	5h
Wingspan	2.15m (7 ft)	2.65m (8.7 ft)	4m (13 ft)
Max Weight (MTOW)	2kg (4.4 lbs)	3kg (6.6 lbs)	8kg (17.6 lbs)
Payload	0.5kg (1 lb)	1kg (2.2 lbs)	2.3kg (5 lbs)
Cruise Speed	60 km/h (17 m/s)	65 km/h (18 m/s)	75 km/h (21 m/s)
Wind Resistance	36 km/h (10 m/s)	40 km/h (11 m/s)	50 km/h (14 m/s)
Deployment Time	8 min	10 min	12 min



EO / IR CAMERA SPECIFICATIONS



Retractable mechanism



COLIBRI212



NIGHTHAWK2-UZ

Resolution	1280 x 720	1280 x 720
Zoom	X40 (X20 + x2 digital)	X40 (X20 + X2 digital)
Field of View (FOV)	60° WFOV – 3° NFOV – 1.5° DFOV	60° WFOV – 3° NFOV – 1.5° DFOV
Thermal Resolution	640 x 480	1280 x 720
Pitch FOR	-45° to +135°	-45° to +135°
Roll FOR	-180° to +180°	-180° to +180°
Weight	180 grams	350 grams

TACTICAL MAPPING

Imaging characteristics - Typical for 24Mpx

Flight Altitude	Definition	Productivity*
80 m	1 cm	2 km²/h
120 m	1.5 cm	3 km²/h
500 m	6.4 cm	14 km²/h

*With standard 45% lateral overlap

Mapping / Photogrammetry



24 Mpx



42 Mpx

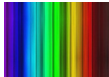


61 Mpx

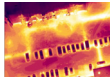
Inspections / Measurement



Monitoring



Multispectral



Thermal

CUSTOM PAYLOAD CONTROL

IP Bridge for seamless payload control via the command and control link up to 3 Mbit/s

Custom Payload Capability

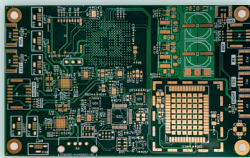
NOCTUA 215
500g

NOCTUA 265
1000g

NOCTUA 400
2300g

NOCTUA 400
has dual camera
payload capability

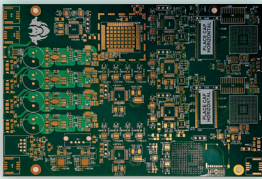
AVIONICS



ARIES

- Simple
- Rugged
- 3000 flight hours of experience

Necessary reliability for high risk and low altitude missions



CERBERE

- No Single Point of Failure (NSPOF)
- Resilient
- Aiming for D0178C-DAL C Certification

Safe for sensitive missions and valuable payloads